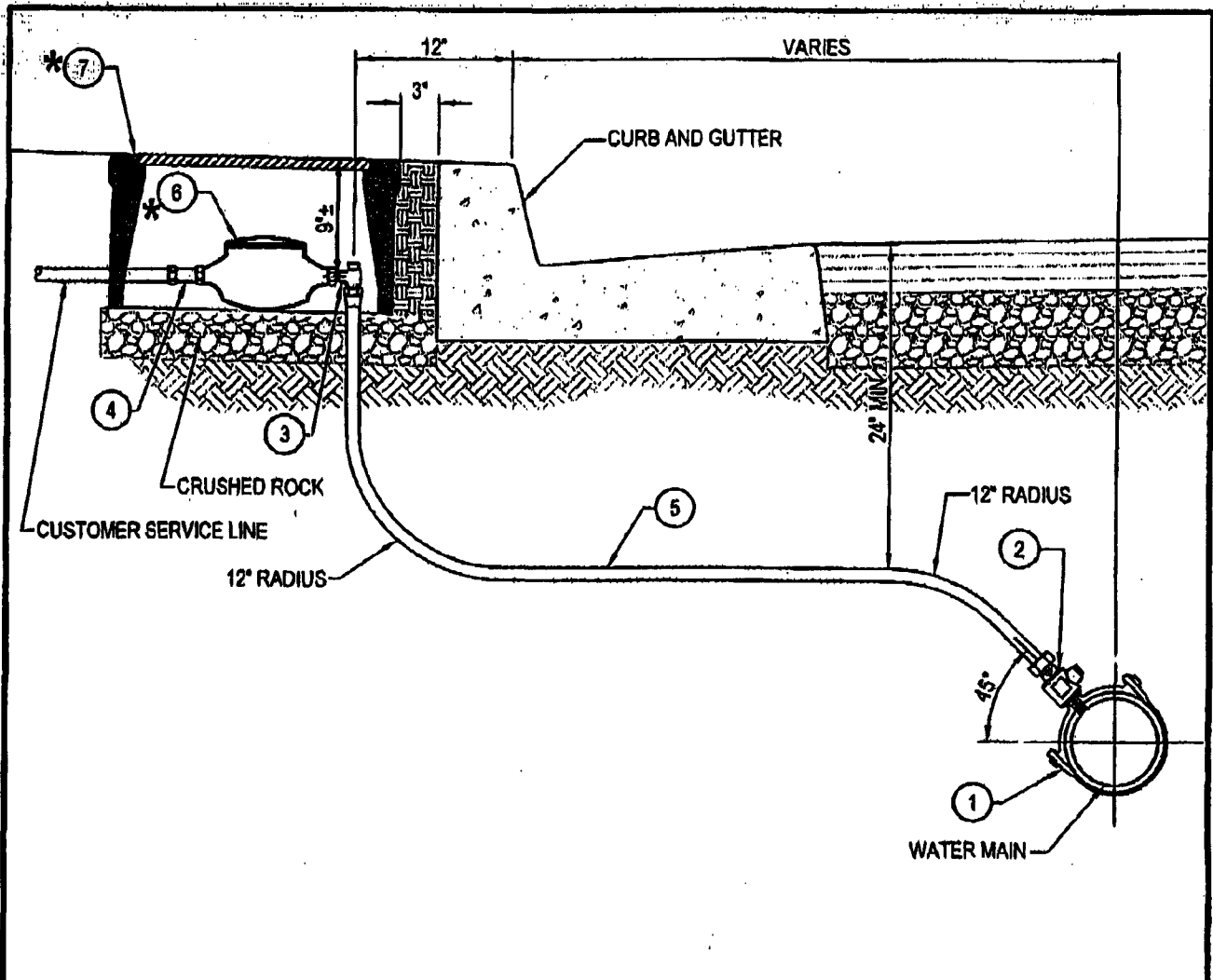


STANDARD	DESCRIPTION	DATE REVISED
W-1	1" SERVICE CONNECTION	AUGUST 2005
W-2	1 1/2" SERVICE CONNECTION	AUGUST 2005
W-3	2" SERVICE CONNECTION	AUGUST 2005
W-4	3" SERVICE CONNECTION WITH 2" METERED BY-PASS	AUGUST 2005
W-5	4" SERVICE CONNECTION WITH 2" METERED BY-PASS	AUGUST 2005
W-6	6" SERVICE CONNECTION WITH 4" D.I.P. BY-PASS	AUGUST 2005
W-7	8" SERVICE CONNECTION WITH 4" D.I.P. BY-PASS	AUGUST 2005
W-8	GATE VALVE AND VALVE COVER ASSEMBLY	AUGUST 2005
W-9	2" BLOW-OFF ASSEMBLY	AUGUST 2005
W-10	1" AIR / VACUUM VALVE RELEASE ASSEMBLY	AUGUST 2005
W-11	FIRE HYDRANT ASSEMBLY	AUGUST 2005
W-12	FIXED POST BARRIER	AUGUST 2005
W-13	THRUST BLOCKS	AUGUST 2005
W-14	PIPE SEWER CASEMENT	AUGUST 2005
W-15	TEMPORARY FLUSH ASSEMBLY	AUGUST 2005
W-16	TYPICAL TRENCH DETAIL	AUGUST 2005
W-17	DOUBLE CHECK DETECTOR ASSEMBLY	AUGUST 2005
W-18	REDUCED PRESSURE PRINCIPLE BACKFLOW PREVENTION ASSEMBLY	AUGUST 2005
W-19	ADJUSTABLE PIPE SUPPORT ASSEMBLY	AUGUST 2005
W-20	CONNECTION TO EXISTING MAIN LINES	AUGUST 2005
W-21	CONSTRUCTION ZONES - NEW WATER MAIN	AUGUST 2005
W-22	CONSTRUCTION ZONES - NEW SEWER MAIN	AUGUST 2005

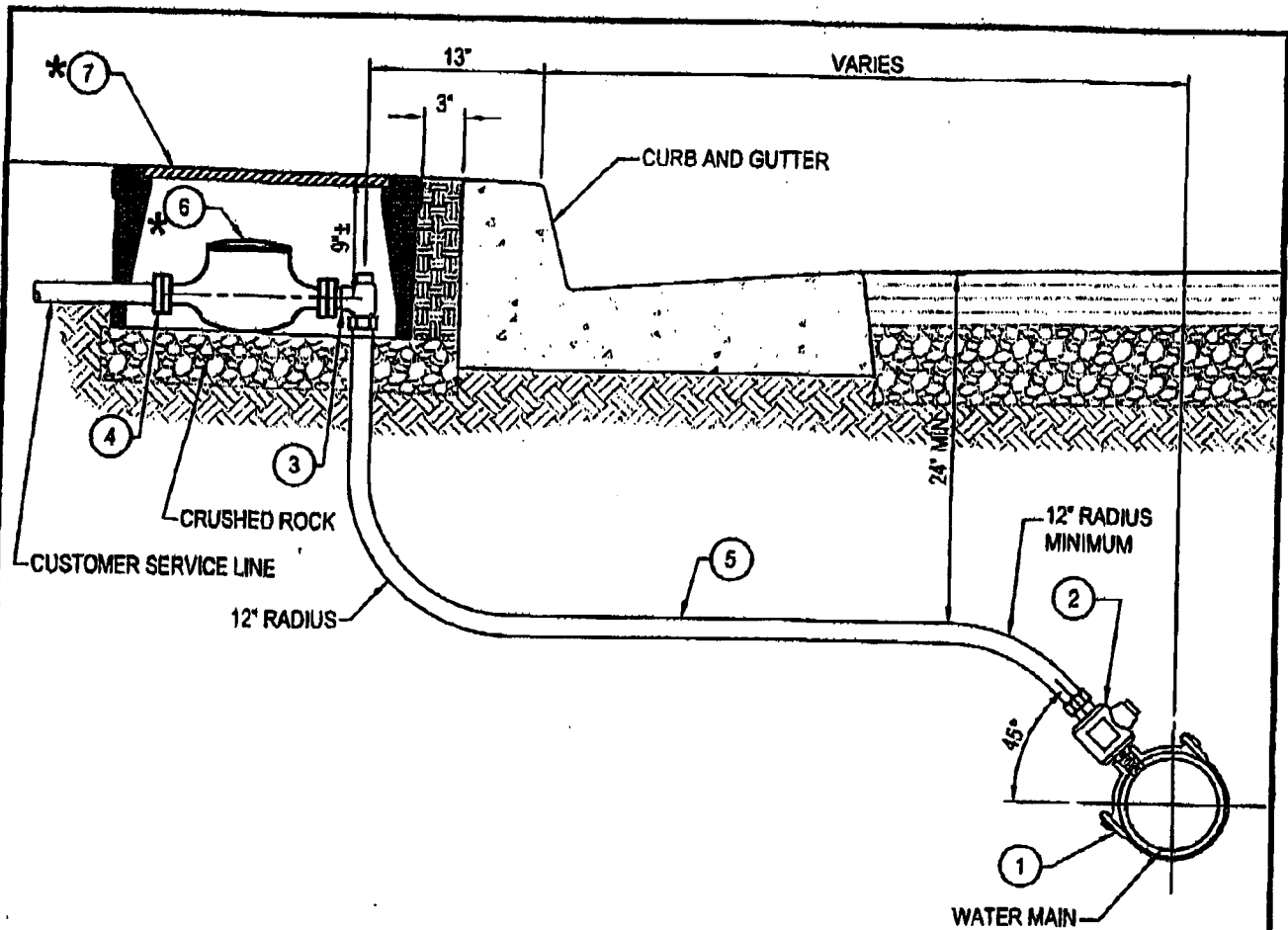
<b>CITY OF ALHAMBRA</b>		REV. No.	DATE	BY/APP.	ITEM
DEPARTMENT OF UTILITIES		APPROVED: <i>[Signature]</i>		11-30-05	
<b>LIST OF STANDARDS</b>		DIRECTOR OF UTILITIES		DATE	
APPROVED: <i>[Signature]</i>	11/2/05	BY	DATE	SCALE:	DWG. No.
DEPUTY DIRECTOR - UTILITIES	DATE	DESIGNED	DRB	AUG. 2005	AS SHOWN
<i>[Signature]</i>	43296	DRAWN	DRB	AUG. 2005	DATE:
CITY ENGINEER	RCE No.	CHECKED	TLK	AUG. 2005	AUGUST 2006
	DATE				W-0
					SHT. 1 OF 1



CONSTRUCTION NOTES			
NO.	DESCRIPTION	JAMES JONES	CAMBRIDGE BRASS
①	DOUBLE STRAP SERVICE SADDLE	J-979	SERIES 810
②	1" CORPORATION MAIN STOP, M.I.P. x COMP.	J-1935SG	301-M4H4
③	ANGLE INVERTED KEY METER VALVE, COMP. x SWIVEL NUT	J-1963WSG	210-H4T4
④	1" STRAIGHT METER COUPLING, M.I.P. x SWIVEL NUT	J-130	417-T4M4
⑤	1" TYPE 'K' COPPER TUBING		
*⑥	1" WATER METER, SENSUS MODEL OR NEPTUNE MODEL		
*⑦	POLYMER CONCRETE METER BOX BY ARMORCAST		

\*TO BE PROVIDED BY THE CITY OF ALHAMBRA

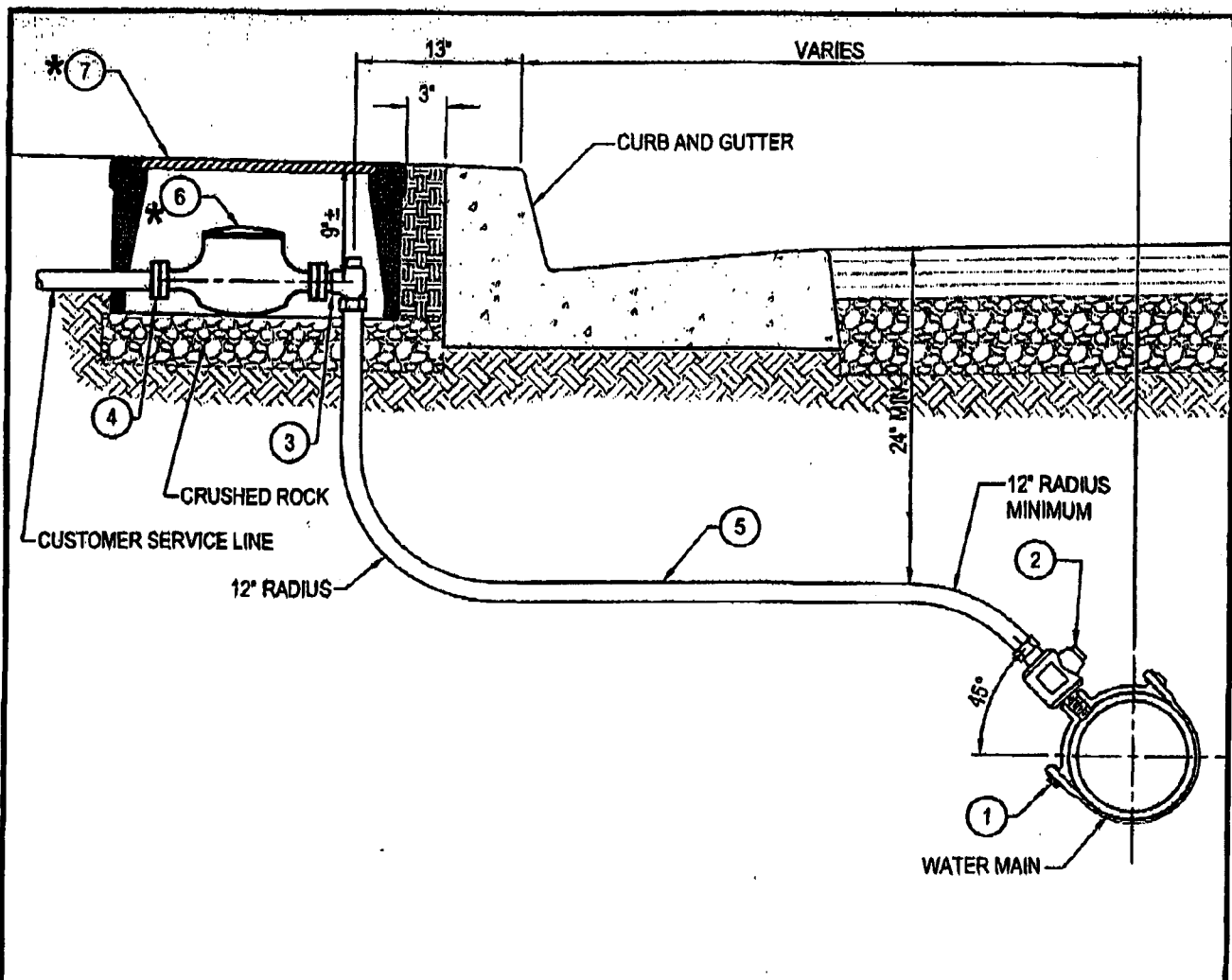
<b>CITY OF ALHAMBRA</b> DEPARTMENT OF UTILITIES <b>1" SERVICE CONNECTION</b>		REV. No.	DATE	BY/APP.	ITEM
		APPROVED: <i>[Signature]</i> 11/20/05 DIRECTOR OF UTILITIES			DATE: 11.20.05
APPROVED:	DATE:	BY:	DATE:	SCALE:	DWG. No.
<i>[Signature]</i>	11/2/05	DRB	AUG. 2005	AS SHOWN	W-1
DEPUTY DIRECTOR - UTILITIES	DATE	DRB	AUG. 2005	DATE:	
<i>[Signature]</i>	43296	TLK	AUG. 2005	AUGUST 2005	SHT. 1 OF 1
CITY ENGINEER	RCE No.	DATE			



CONSTRUCTION NOTES			
NO.	DESCRIPTION	JAMES JONES	CAMBRIDGE BRASS
(1)	DOUBLE STRAP SERVICE SADDLE	J-979	SERIES 810
(2)	1 1/2" CORPORATION MAIN STOP, M.I.P. x COMP.	J-1935SG	301-M6H6
(3)	1 1/2" FLANGED ANGLE METER STOP, COMP. x FLANGE	J-1975WSG	210-H6MF6
(4)	1 1/2" METER COUPLING, FLANGE x I.P.T.	J-129	421-6
(5)	1 1/2" TYPE "K" COPPER TUBING		
* (6)	1 1/2" WATER METER, SENSUS MODEL OR NEPTUNE MODEL		
* (7)	POLYMER CONCRETE METER BOX BY ARMORCAST		

\*TO BE PROVIDED BY THE CITY OF ALHAMBRA

<b>CITY OF ALHAMBRA</b>		REV. No.	DATE	BY/APP.	ITEM
DEPARTMENT OF UTILITIES		APPROVED: <i>[Signature]</i>		DATE: 11-30-05	
1 1/2" SERVICE CONNECTION		DIRECTOR OF UTILITIES			
APPROVED: <i>[Signature]</i>	DATE: 11/2/05	DESIGNED	BY: DRB	DATE: AUG. 2005	SCALE: AS SHOWN
DEPUTY DIRECTOR - UTILITIES	DATE: 9/2/05	DRAWN	BY: DRB	DATE: AUG. 2005	DATE: AUGUST 2005
CITY ENGINEER	RCE No. 43216	CHECKED	BY: TLX	DATE: AUG. 2005	DWG. No. W-2
					SHT. 1 OF 1



CONSTRUCTION NOTES			
NO.	DESCRIPTION	JAMES JONES	CAMBRIDGE BRASS
(1)	DOUBLE STRAP SERVICE SADDLE	J-979	SERIES 810
(2)	2" CORPORATION MAIN STOP, I.P.T. x COMP.	J-1935SG	301-M7H7
(3)	2" FLANGED ANGLE METER STOP, COMP. x FLANGE	J-1975WSG	210-H7MF7
(4)	2" METER COUPLING, FLANGE x I.P.T.	J-129	421-7
(5)	2" TYPE "K" COPPER TUBING		
* (6)	2" WATER METER, SENSUS MODEL OR NEPTUNE MODEL		
* (7)	POLYMER CONCRETE METER BOX BY ARMORCAST		

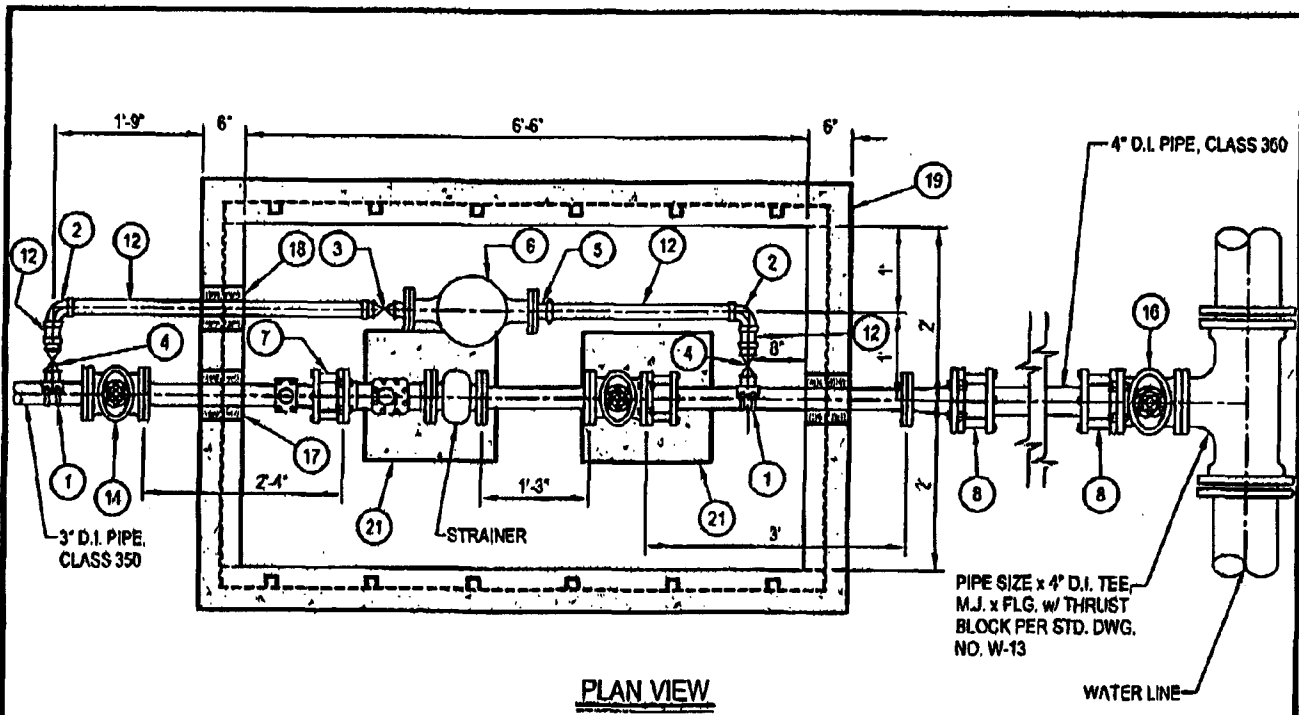
\*TO BE PROVIDED BY THE CITY OF ALHAMBRA

**CITY OF ALHAMBRA**  
 DEPARTMENT OF UTILITIES  
 2" SERVICE CONNECTION

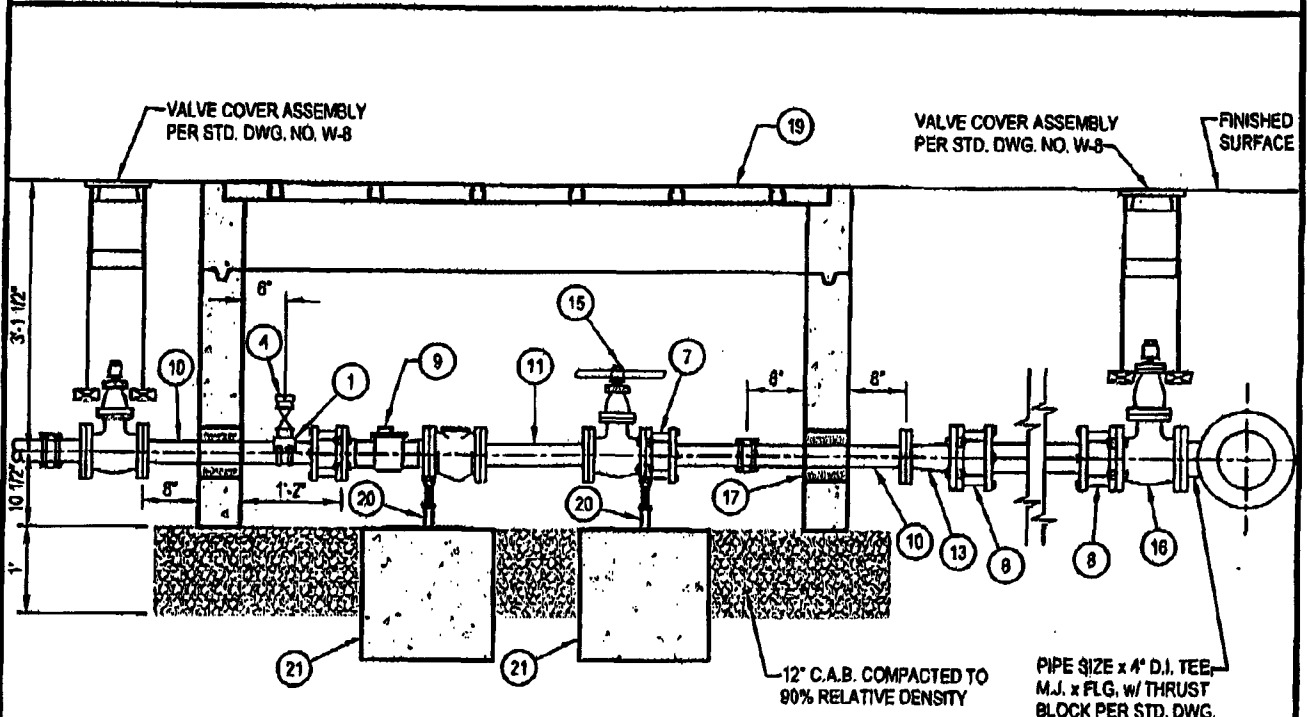
APPROVED: *Tom Calhoun* 11/2/05  
 DEPUTY DIRECTOR - UTILITIES DATE

*[Signature]* 43296 9/2/05  
 CITY ENGINEER RCE No. DATE

REV. No.	DATE	BY/APP.	ITEM
APPROVED: <i>[Signature]</i>		11-30-05	
DIRECTOR OF UTILITIES		DATE	
DESIGNED	DRB	DATE	SCALE: AS SHOWN
DRAWN	DRB	DATE	DATE: AUGUST 2005
CHECKED	TLK	DATE	DATE: AUGUST 2005
			DWG. No. W-3
			SHT. 1 OF 1



**PLAN VIEW**



**ELEVATION VIEW**

METER OPERATING RANGE: 5 TO 350 GPM

**CITY OF ALHAMBRA**  
 DEPARTMENT OF UTILITIES  
**3\"/>
 APPROVED: *Tom Cul* 11/21/05  
 DEPUTY DIRECTOR - UTILITIES  
 CITY ENGINEER**

REV. No.	DATE	BY/APP.	ITEM
1			
APPROVED: <i>mmmtan</i>		DATE: 11-30-05	
DIRECTOR OF UTILITIES		DATE	
DESIGNED	DRB	AUG. 2005	SCALE: AS SHOWN
DRAWN	DRB	AUG. 2005	DATE: AUGUST 2005
CHECKED	TLK	AUG. 2005	DWG. No. W-4
			SHT. 1 OF 2

### CONSTRUCTION NOTES

NO.	DESCRIPTION	JAMES JONES	CAMBRIDGE BRASS
1	DOUBLE STRAP SERVICE SADDLE WITH 2" TAP	J-979	SERIES 810
2	2" QUARTER BEND COUPLING, COMP. x COMP.	J-2611	105-H7H7
3	2" BALL METER VALVE, COMP. x METER FLANGE	J1939SG	212-H7MF7
4	2" CORPORATION MAIN STOP, M.I.P. x COMP.	J-1935SG	301-M7H7
5	2" METER COUPLING, METER FLANGE x PACK JOINT, FORD MODEL NO. CF34-77		
* 6	2" METER, FLGxFLG, SENSUS MODEL NO. 2" SR OR NEPTUNE MODEL NO. T-10		
7	3" FLANGE COUPLING ADAPTER, ROMAC MODEL NO. FCA501		
8	4" FLANGE COUPLING ADAPTER, ROMAC MODEL NO. FCA501		
9	3" METER, FLGxFLG, (WITH STRAINER), SENSUS MODEL W-350 DR OR NEPTUNE MODEL HP TURBINE		
10	3" DUCTILE IRON SPOOL, CLASS 350, FLGxPE		
11	3" DUCTILE IRON SPOOL, CLASS 350, FLGxFLG		
12	2" TYPE "K" COPPER TUBING		
13	4"x3" D.I. REDUCER, FLGxFLG		
14	3" RESILIENT WEDGE GATE VALVE, FLGxFLG, WITH VALVE COVER ASSEMBLY PER STD. DWG. NO. W-8.		
15	3" RESILIENT WEDGE GATE VALVE, FLGxFLG, WITH HANDWHEEL		
16	4" RESILIENT WEDGE GATE VALVE, FLGxFLG, WITH VALVE COVER ASSEMBLY PER STD. DWG. NO. W-8.		
17	7" DIA. x 6" WALL SLEEVE w/ WATER STOP NON-SHRINK WATER TIGHT CAULKING		
18	8" DIA. x 6" WALL SLEEVE w/ WATER STOP NON-SHRINK WATER TIGHT CAULKING		
19	4' x 6'-6" x 48" DEEP PARKWAY WATER VAULT WITH COVER DESIGNED FOR PARKWAY LOADING, JENSEN PRECAST MODEL NO. K466-FH48-08P.		
20	ADJUSTABLE PIPE SUPPORT PER STD. DWG. NO. W-19		
21	18" SQUARE x 18" DEEP CONCRETE PEDESTAL FOR PIPE SUPPORT.		

\* TO BE PROVIDED BY THE CITY OF ALHAMBRA

UNLESS OTHERWISE SPECIFIED ON PLANS OR CALLED FOR IN THE SPECIFICATIONS:

1. ANY CHANGES TO STANDARD MUST BE APPROVED BY THE CITY ENGINEER.
2. THE VAULT COVER SHALL HAVE AT LEAST 3 PLATES WITH FLUSH LIFT HANDLES AND BOLT DOWN FEATURES. THE COVER SHALL BE DESIGNED FOR TRAFFIC LOADING IF LOCATED IN AREA WITH TRAFFIC ACCESS. COVER SHALL BE SUPPORTED BY REMOVABLE BEAMS. METER READING LID SHALL BE PROVIDED CENTERED OVER THE METER REGISTER. EACH READING LID SHALL BE FLUSH MOUNT, RECTANGULAR IN SHAPE AND HINGED.
3. ALL BOLTS SHALL BE STAINLESS STEEL.
4. GATE VALVES 4" IN SIZE AND LARGER SHALL BE RESILIENT WEDGE GATE VALVES. GATE VALVES UNDER 4" IN SIZE SHALL BE PER AWWA C500-LATEST EDITION. ALL 3" VALVES OR LARGER WHICH ARE LOCATED INSIDE THE VAULT, SHALL BE EQUIPPED WITH A HANDWHEEL.
5. ALL VAULTS SHALL BE EQUIPPED WITH A PRECAST CONCRETE FLOOR, SUMP WITH GRATE, AND 1 C.F. OF 3/4" GRAVEL BELOW SUMP.

<b>CITY OF ALHAMBRA</b>		REV. No.	DATE	BY/APP.	ITEM
DEPARTMENT OF UTILITIES		APPROVED: <i>mmmontan</i>		DATE: 11-30-05	
<b>3" SERVICE CONNECTION WITH 2" METERED BY-PASS</b>		DIRECTOR OF UTILITIES		DATE	
APPROVED: <i>Tom Cole</i>	DATE: 11/2/05	DESIGNED	DRB	DATE	SCALE: AS SHOWN
DEPUTY DIRECTOR - UTILITIES	DATE	DRAWN	DRB	DATE: AUG. 2005	<b>W-4</b>
CITY ENGINEER	DATE	CHECKED	TLK	DATE: AUGUST 2005	
	RCE No. 43296				SWT 2 OF 2



### CONSTRUCTION NOTES

NO.	DESCRIPTION	JAMES JONES	CAMBRIDGE BRASS
1	DOUBLE STRAP SERVICE SADDLE WITH 2" TAP	J-979	SERIES 810
2	2" QUARTER BEND COUPLING, COMP. x COMP.	J-2611	105-H7H7
3	2" BALL METER VALVE, COMP. x METER FLANGE	J1939SG	212-H7MF7
4	2" CORPORATION MAIN STOP, M.I.P. x COMP.	J-1935SG	301-M7H7
5	2" METER COUPLING, METER FLANGE x PACK JOINT, FORD MODEL NO. CF34-77		
* 6	2" METER, FLGxFLG, SENSUS MODEL NO. 2" SR OR NEPTUNE MODEL NO. T-10		
7	4" FLANGE COUPLING ADAPTER, ROMAC MODEL NO. FCA501		
8	4" METER, FLGxFLG, (WITH STRAINER), SENSUS MODEL W-1000 DR OR NEPTUNE MODEL HP TURBINE		
9	4" DUCTILE IRON SPOOL, CLASS 350, FLGxPE		
10	4" DUCTILE IRON SPOOL, CLASS 350, FLGxFLG		
11	2" TYPE "K" COPPER TUBING		
12	4" RESILIENT WEDGE GATE VALVE, FLGxFLG, WITH VALVE COVER ASSEMBLY PER STD. DWG. NO. W-8.		
13	4" RESILIENT WEDGE GATE VALVE, FLGxFLG, WITH HANDWHEEL		
14	8" DIA. x 6" WALL SLEEVE w/ WATER STOP NON-SHRINK WATER TIGHT CAULKING		
15	6" DIA. x 6" WALL SLEEVE w/ WATER STOP NON-SHRINK WATER TIGHT CAULKING		
16	4' x 6'-6" x 48" DEEP PARKWAY WATER VAULT WITH COVER DESIGNED FOR PARKWAY LOADING, JENSEN PRECAST MODEL NO. K468-FH48-00P.		
17	ADJUSTABLE PIPE SUPPORT PER STD. DWG. NO. W-19		
18	18" SQUARE x 18" DEEP CONCRETE PEDESTAL FOR PIPE SUPPORT.		

\* TO BE PROVIDED BY THE CITY OF ALHAMBRA

UNLESS OTHERWISE SPECIFIED ON PLANS OR CALLED FOR IN THE SPECIFICATIONS:

1. ANY CHANGES TO STANDARD MUST BE APPROVED BY THE CITY ENGINEER.
2. THE VAULT COVER SHALL HAVE AT LEAST 3 PLATES WITH FLUSH LIFT HANDLES AND BOLT DOWN FEATURES. THE COVER SHALL BE DESIGNED FOR TRAFFIC LOADING IF LOCATED IN AREA WITH TRAFFIC ACCESS. COVER SHALL BE SUPPORTED BY REMOVABLE BEAMS. METER READING LID SHALL BE PROVIDED CENTERED OVER THE METER REGISTER. EACH READING LID SHALL BE FLUSH MOUNT, RECTANGULAR IN SHAPE AND HINGED.
3. ALL BOLTS SHALL BE STAINLESS STEEL.
4. GATE VALVES 4" IN SIZE AND LARGER SHALL BE RESILIENT WEDGE GATE VALVES. GATE VALVES UNDER 4" IN SIZE SHALL BE PER AWWA C500-LATEST EDITION. ALL 3" VALVES OR LARGER WHICH ARE LOCATED INSIDE THE VAULT, SHALL BE EQUIPPED WITH A HANDWHEEL.
5. ALL VAULTS SHALL BE EQUIPPED WITH A PRECAST CONCRETE FLOOR, SUMP WITH GRATE, AND 1 C.F. OF 3/4" GRAVEL BELOW SUMP.

<b>CITY OF ALHAMBRA</b>		REV. No.	DATE	BY/APP.	ITEM	
DEPARTMENT OF UTILITIES		APPROVED		<i>mmontana</i> 11-30-05		
4" SERVICE CONNECTION WITH 2" METERED BY-PASS		DIRECTOR OF UTILITIES		DATE		
APPROVED:		BY	DATE	SCALE	DWG. No.	
<i>Tom Colby</i>	11/2/05	DRB	AUG. 2005	AS SHOWN	<b>W-5</b>	
DEPUTY DIRECTOR - UTILITIES		DRAWN	DRB	AUG. 2005		DATE:
CITY ENGINEER	43296	CHECKED	TLK	AUG. 2005		AUGUST 2005
	RCE No.		DATE		SHT. 2 OF 2	